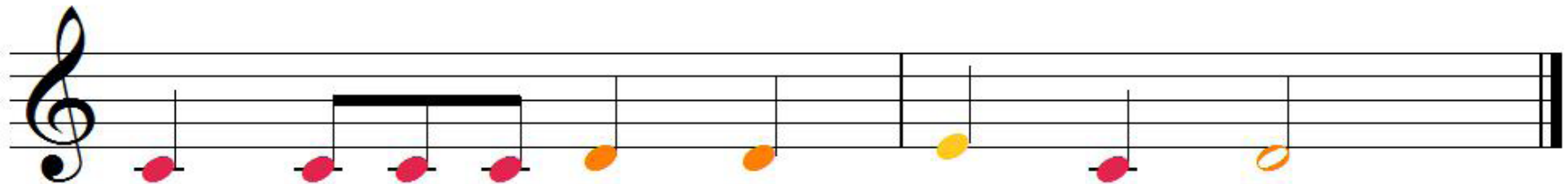
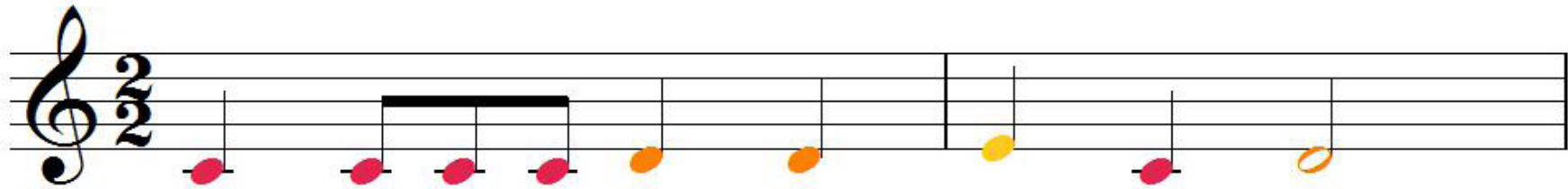
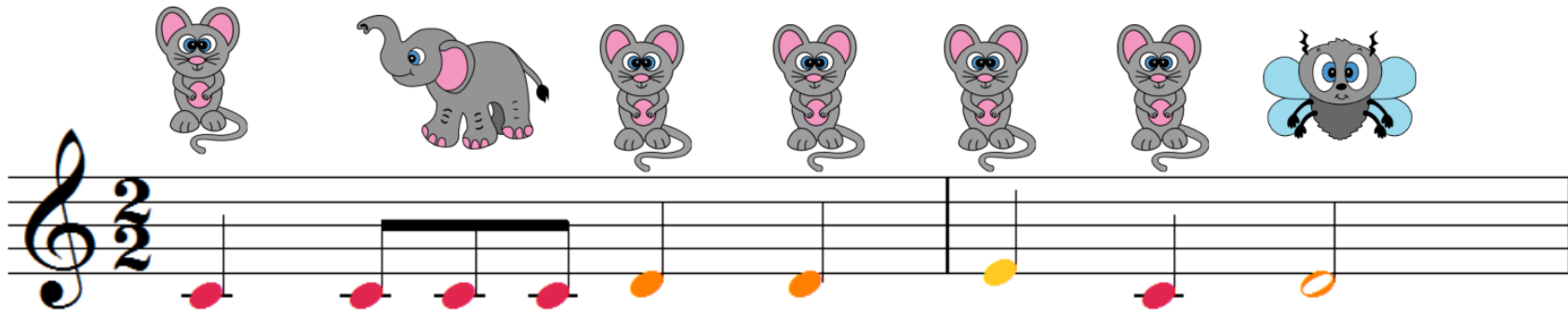


'March' from 'The Nutcracker' (Tchaikovsky)

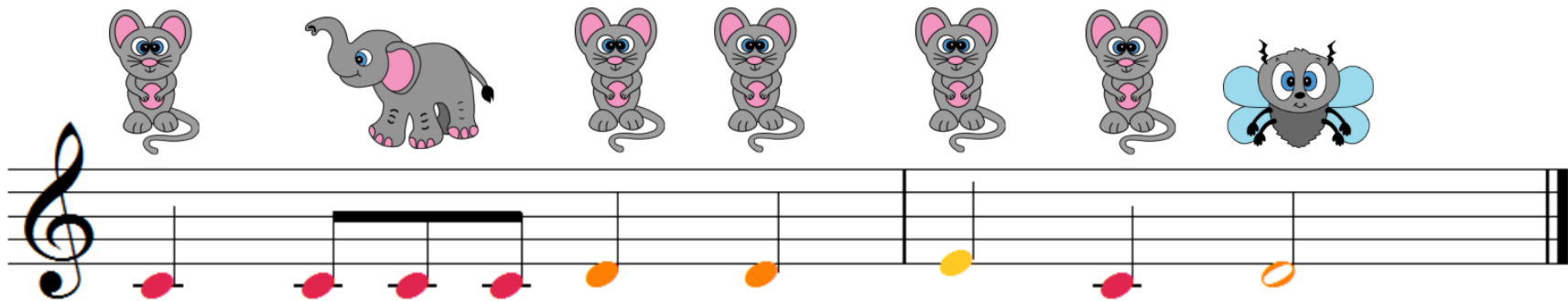


Notes: C, D, E, F, G, A, B, C', D'

'March' from 'The Nutcracker' (Tchaikovsky)



A musical staff in 3/4 time with a treble clef. Above the staff are seven illustrations: a mouse, an elephant, a mouse, a mouse, a mouse, a mouse, and a bee. The notes on the staff are: C (red), D (red), E (red), F (orange), G (orange), A (yellow), B (red), and C' (orange).



A musical staff in 3/4 time with a treble clef. Above the staff are seven illustrations: a mouse, an elephant, a mouse, a mouse, a mouse, a mouse, and a bee. The notes on the staff are: C (red), D (red), E (red), F (orange), G (orange), A (yellow), B (red), and C' (orange).